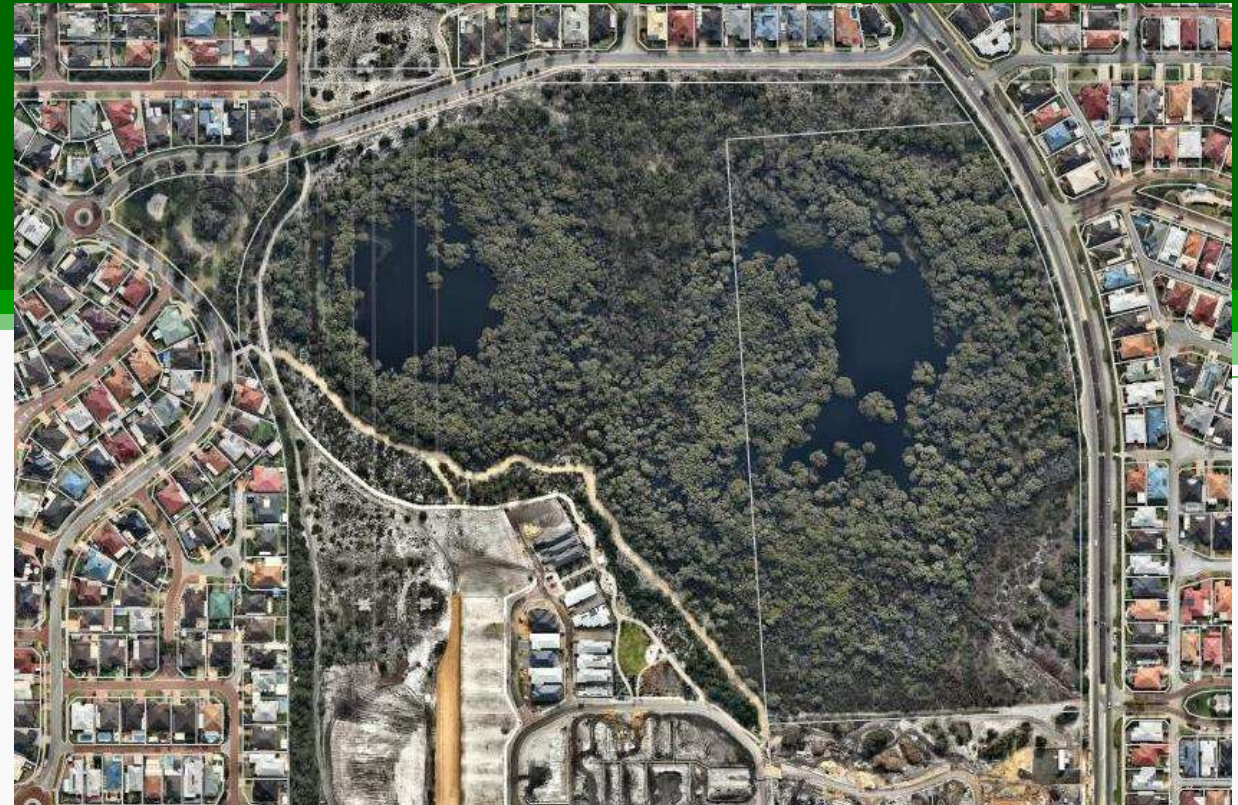


Wentworth West Wetlands



December 2013 NearMap



June 2018 NearMap

Acknowledgements

The following are acknowledged for their contributions to this project:

- Richard Noble
- EndPlan Environmental

Presentation Outline

- Site
- Scope of works
- Site Challenges
- Site Targets
- Implementation
- Results

Wentworth West Wetland

- Conservation category sumpland
- Five existing vegetation types¹
 - *Melaleuca raphiophylla* Low Open Woodland
 - *Melaleuca teretifolia* Tall Open Shrubland
 - *Kunzea glabrescens* Tall Close Shrubland
 - *Banksia menziesii* and *attenuata* low woodland
 - *Eucalyptus rudis* Open Woodland over *Kunzea glabrescens* Tall Open Shrubland
- Cleared/Completely degraded areas¹
- Condition Very Good to Completely Degraded¹
- 27 weed species recorded in the area¹

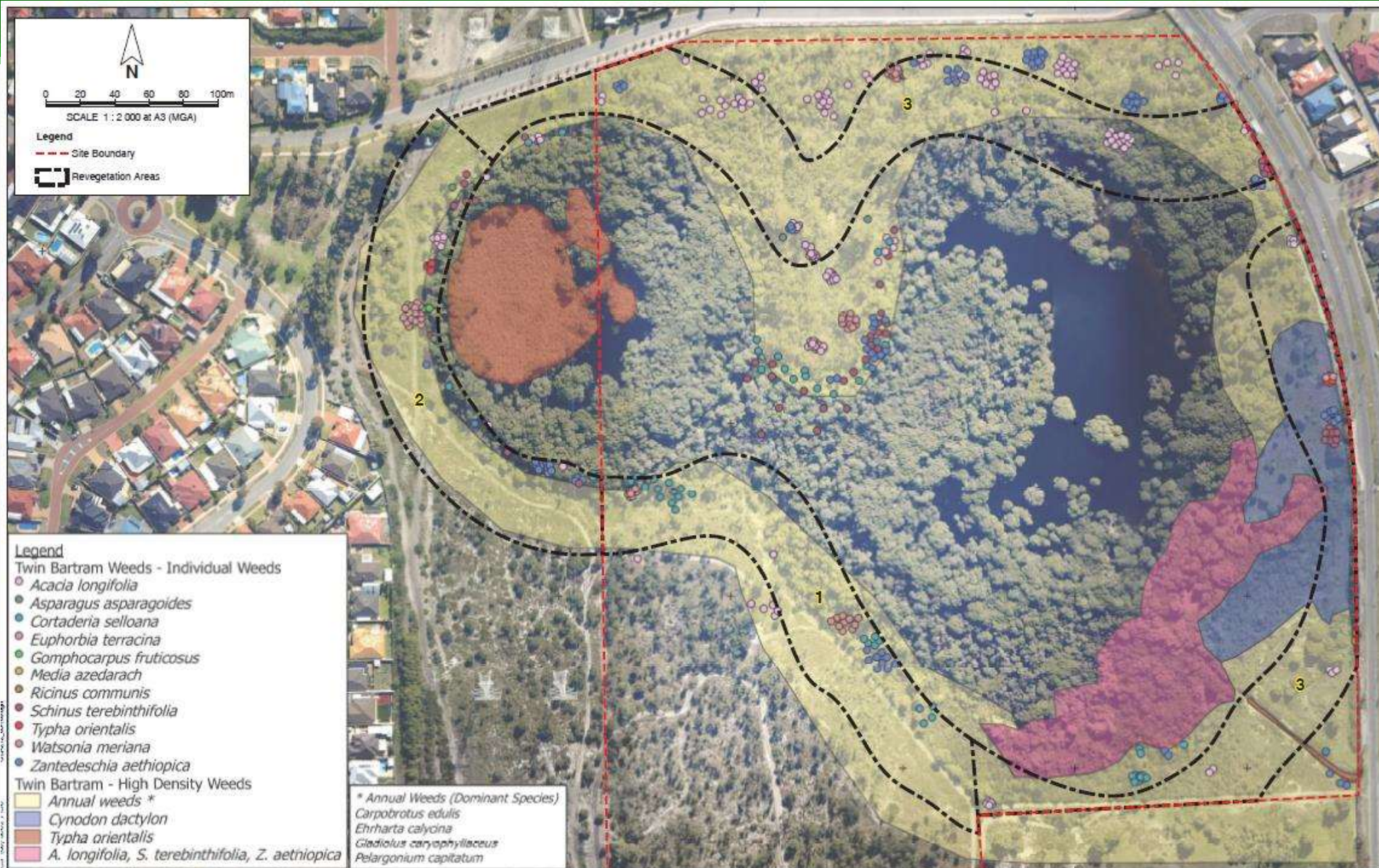


December 2013 NearMap

¹ Ecoscape (Australia) Pty Ltd (2012) *Thomsons Lake Stage 10 – Environmental Assessment Report*. Report 7765-26491-11R final rev 1 prepared for Gold Estates Australia (1902) Ltd

Scope of Works

- 2014 to 2018
- Management of three zones
- Weed control
- Revegetation
- Maintenance
- Monitoring



Site Challenges

- Weeds

- Weeds of National Significance
- Grasses
- Declared Plants
- Woody weeds
- Typha

- Powerlines

- Site disturbances

- Fauna



Site Targets

- Hand over to City of Cockburn
- Success Criteria
 - 1.6 plants/m²
 - >70% foliar cover dryland
 - >85% foliar cover sedges
 - 75% of dryland species 80% of wetland species represented
 - Weeds <5%
 - Weeds <5 plants/m²
 - No High Priority, WONS or Declared Weeds



September 2014



September 2017

Implementation

- Quarterly weed control
- 45,000 tubestock
 - Initial planting (2015)
 - Infill planting (2016 and 2017)
- Monthly green stock maintenance
- Biannual monitoring
- Formalisation of fire access tracks
- Targeted Typha and woody weed control
- Annual reporting



September 2014



September 2017



Schinus terebinthifolius basal barking



Typha orientalis treatment and brush cutting



Tubestock installation

Results – October 2017

Native species:

- Density from 0.12 to 2.06 plant per m²
- Foliar cover from 12% to 60.8%
- Diversity from 18 to 52 species
- 78% of revegetation species represented

Weed species:

- Density from 7.21 to 1.36 plant per m²
- Foliar cover from 89.2% to 4.8%
- Removal of high priority weeds, including WONS and Declared Pests
- Typha infestation (~0.8 ha) successfully removed





December 2013 NearMap



October 2017 NearMap

Before and After



September 2014



September 2017

Before and After



September 2014



September 2017

Before and After



September 2014



September 2017

Summary

- Revegetation of Wentworth West Wetland from 2014 to 2018
- Three management zones
- Extensive weed control and revegetation to zones 1 and 2 with weed control to the rest of site
- Success in achieving completion criteria

Questions?