



Weeding Out The Amateurs:

improving outcomes by setting standards



Weeding Out The Amateurs

“a person inexperienced or unskilled in a particular activity”

Professionals in one discipline can be amateurs in another



Weeding Out The Amateurs

A quick introduction: Local Governments as managers of natural areas

- Legacy sites
- Bush Forever
- Wetlands
- Land use planning



Weeding Out The Amateurs

The system we've become accustomed to

- Developer-driven
- Design, construct and maintain
- Recreation spaces
- Landscape features
- Design sophistication
- Landscape architects
- Landscape contractors
- Parkland maintenance
- LG specs, approvals



Weeding Out The Amateurs

It just doesn't work for natural areas

CODE	SPECIES	SIZE	QUANTITY
AC	ANGOPHORA COSTATA	100 Ltr	20 Nos
AF	AGONIS FLEXOUSA	100 Ltr	51 Nos
ER	EUCALYPTUS RUDIS	100 Ltr	39 Nos
QR	QUERCUS RUBRA	500 Ltr	7 Nos
ME	MELALEUCA PREISSIANA	200 Ltr	14 Nos
		100 Ltr	15 Nos
		200 Ltr	13 Nos
XP	Xanthorrhoea Preissii	transplant	11 Nos

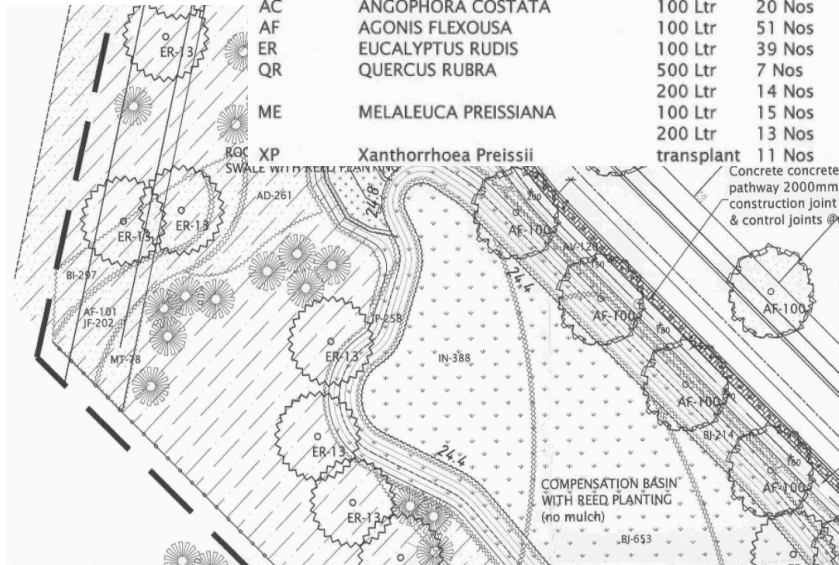
TUBESTOCK PLANTING @ 3/Sq.M

SPECIES

AD	Adenanthos Cygnorum
AF	Allocasuarina Fraseriana
AH	Allocasuarina Humilis
BI	Banksia Illicifolia
BM	Banksia Menziesii
BE	Bossiaea Eriocarpa
BU	Burchardia Umbellata
JF	Jacksonia Furcellata
LL	Lepidosperma Longitudinale
MT	Melaleuca Thymoides

130mm @ 3/Sq.M Spacing

AD	Adenanthos Cygnorum
AV	Anigozanthos viridus
BI	Banksia Illicifolia
BM	Banksia Menziesii
BE	Bossiaea Eriocarpa



Same (inappropriate) skill set applied




- Inefficient
- Costly, frustrating
- Very poor outcomes



CITY OF GOSNELLS

Weeding Out The Amateurs

To be honest.....

- Different skill set required, same skill set applied 
- “Design” and species selection by landscape architect
- Irrigation?? 
- Construction by landscape contractors/backpackers **WRONG!**
- Maintenance by contractors – spraying, slashing (Management Plan?) 
- Handover – compromise
- **INEFFICIENT**



MR. WRONG

by Roger Hargreaves



Weeding Out The Amateurs



Page 1 of 2

Policy

- Precedent?
- Clear policy
- Application
- Objectives:
 - *To clearly define the City's requirements where the rehabilitation and/or revegetation of natural areas is required.*
 - *To ensure the consistency and acceptability of outcomes from rehabilitation and revegetation initiatives.*
 - *To ensure that natural areas entering the City's management portfolio are of an acceptable condition for ongoing management.*
- Implementation

POLICY STATEMENT

PURPOSE

POLICY

1. Application

This policy applies where a land developer is required (by a condition of planning or subdivision approval) to conduct works in or manage natural areas, including bushland, riparian and wetland areas and any identified associated buffer to those areas.

POLICY NO. 6.2.2 REHABILITATION AND REVEGETATION OF NATURAL AREAS

To formalise the City's position and requirements with regard to the rehabilitation and revegetation of bushland and wetland areas



CITY OF GOSNELLS

Weeding Out The Amateurs

Guidelines

- Project planning
 - Detailed scope of works, mapping and design drawings - good understanding of site and issues
 - Map and describe rehabilitated/revegetation, existing vegetation, soil, topography, inundation, adjacent land uses/ownership
 - Describe works constraints or influences
 - *Guidance No.6 Rehabilitation of Terrestrial Ecosystems (EPA, 2006)*
- Key planning approaches
- Key management issues and areas
 - ID skill set – specialists - botanists, erosion control specialists, ecosystem restoration specialists, others (consultants and contractors)
 - Describe specialist activities
 - Minimum standards for contractors and personnel



CITY OF GOSNELLS

NATURAL AREAS: REHABILITATION AND REVEGETATION GUIDELINES

1. Introduction

These guidelines support the City of Gosnells Policy No. 6.2.2 - Rehabilitation and Revegetation of Natural Areas.

The guidelines are designed to provide clear direction as to the City's requirements regarding the planning and implementation of rehabilitation and revegetation activities associated with Natural Areas in the City.

The guidelines have been prepared specifically to assist the land development industry, whose members are from time to time required by condition(s) of planning approval to undertake rehabilitation and/or revegetation activities on land that will eventually come under the City's control and management.

The guidelines are also designed to provide detail to assist others who may undertake rehabilitation and/or revegetation activities in the City.

The guidelines detail the City's minimum requirements and specifications for these activities. The objective of the policy and guidelines is to ensure the provision of consistent, quality rehabilitation and revegetation outcomes.

In all instances, it is critical that Natural Areas rehabilitation and revegetation planning, implementation and maintenance are undertaken by suitably qualified and experienced ecological restoration and management contractors.

2. Definitions

2.1 Rehabilitation

Rehabilitation involves the restoration of elements of vegetation structure or function to a disturbed ecological system in an attempt to return it to its pre-disturbance or natural state in terms of abiotic (non-living) conditions, community structure and species composition.

2.2 Revegetation

Revegetation is the replanting of native vegetation. It may be part of a rehabilitation program, and is an important tool for nature conservation used commonly to:

- buffer remnants of native bushland or wetland against edge effects that may include wind, dust, noise, visual intrusion and shallow groundwater influences
- create completely new habitat where degradation has resulted in the removal of habitat
- connect patches of vegetation to facilitate fauna movement



Weeding Out The Amateurs

Guidelines

- Rehabilitation/Revegetation Plan elements

- Project Goals and Timeline
- Statutory and Policy Aspects
- Access Management
- Site Evaluation
- Site Preparation
- Disease Management
- Rehabilitation/Revegetation
- Minimum Standards for Planting
- Maintenance
- Weed Management
- Monitoring and Success Criteria
- Handover
- Fire Management
- Cost Estimate
- Professional Standards



CITY OF GOSNELLS

NATURAL AREAS: REHABILITATION AND REVEGETATION GUIDELINES

1. Introduction

These guidelines support the City of Gosnells Policy No. 6.2.2 - Rehabilitation and Revegetation of Natural Areas.

The guidelines are designed to provide clear direction as to the City's requirements regarding the planning and implementation of rehabilitation and revegetation activities associated with Natural Areas in the City.

The guidelines have been prepared specifically to assist the land development industry, whose members are from time to time required by condition(s) of planning approval to undertake rehabilitation and/or revegetation activities on land that will eventually come under the City's control and management.

The guidelines are also designed to provide detail to assist others who may undertake rehabilitation and/or revegetation activities in the City.

The guidelines detail the City's minimum requirements and specifications for these activities. The objective of the policy and guidelines is to ensure the provision of consistent, quality rehabilitation and revegetation outcomes.

In all instances, it is critical that Natural Areas rehabilitation and revegetation planning, implementation and maintenance are undertaken by suitably qualified and experienced ecological restoration and management contractors.

2. Definitions

2.1 Rehabilitation

Rehabilitation involves the restoration of elements of vegetation structure or function to a disturbed ecological system in an attempt to return it to its pre-disturbance or natural state in terms of abiotic (non-living) conditions, community structure and species composition.

2.2 Revegetation

Revegetation is the replanting of native vegetation. It may be part of a rehabilitation program, and is an important tool for nature conservation used commonly to:

- buffer remnants of native bushland or wetland against edge effects that may include wind, dust, noise, visual intrusion and shallow groundwater influences
- create completely new habitat where degradation has resulted in the removal of habitat
- connect patches of vegetation to facilitate fauna movement



CITY OF GOSNELLS

Weeding Out The Amateurs

Our experience so far

- 2.5 years
- Frequency
- Skill set appropriate to task
- Developer appreciation
- Efficiencies
- First handovers
- Recalcitrants...
- Overall, excellent!!
- Own projects



Weeding Out The Amateurs

Available for download

[http://www.gosnells.wa.gov.au/files/sharedassets/public/website/governance/policy/1-council_policy_6.2.2 - rehabilitation and revegetation of natural areas.doc.pdf](http://www.gosnells.wa.gov.au/files/sharedassets/public/website/governance/policy/1-council_policy_6.2.2_-_rehabilitation_and_revegetation_of_natural_areas.doc.pdf)

The screenshot displays the City of Gosnells website. At the top, there is a blue header with the City of Gosnells logo and navigation links: HOME, ABOUT US, ABOUT OUR CITY, YOUR PROPERTY, LIFESTYLE, and BUILDING AND DEVELOPMENT. A search bar is located on the right side of the header.

The main content area is titled 'Environmental Protection and Management'. On the left, there is a sidebar with a navigation menu. The menu items are: Council, Strategies, Policies and local laws, Local Laws, Policies, Administrative Matters, Awards, Sponsorship and Competitions, Building, Fencing and Amenity on Private Land, City Buildings and Reserves, Community Health Policies, Community Services, Elected Members, Employees, Human Resources and Safety and Health, and Environmental Protection and Management. The 'Environmental Protection and Management' item is highlighted with a red box.

The main content area has a green header 'Environmental Protection and Management'. Below it, there is a section titled 'RELATED LINKS' with a list of links: 2.3.14 - Artificial water bodies, 2.1.11 - Asbestos management, 6.2.2 - Rehabilitation and Revegetation of Natural Areas (highlighted with a red box), Guidelines Attached to Council Policy 6.2.2 - Rehabilitation and Revegetation of Natural Areas, 2.3.12 - Roadside Remnant vegetation management, and CP 2.3.9 - Street Tree Policy. To the right of the links is a photograph of a blue and white striped awning.

Below the 'RELATED LINKS' section, there is a green header 'DID YOU FIND THIS PAGE HELPFUL ?' and a social media sharing section with Facebook and Twitter icons.



CITY OF GOSNELLS