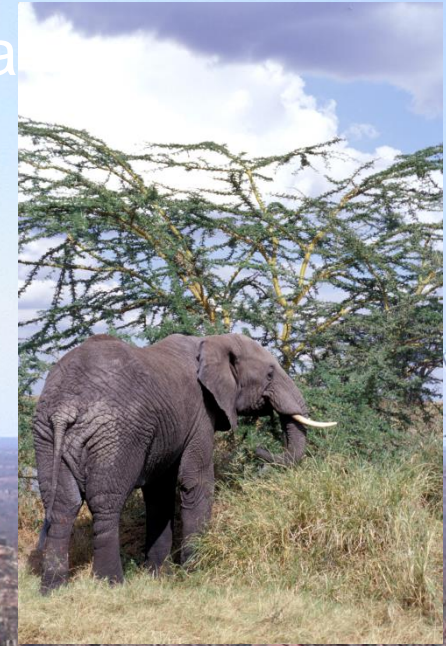


# MAKING QUALITY SEED COLLECTIONS IN REMOTE PLACES





# Remote collecting in Kenya and Tanzania







Durba Hills Canning Stock Route





Archipelago of the Recherche





Central Western Australia





Nuytsland Nature





## Little Sandy Desert





# The Kimberley Collecting Expedition





## Outline

- Background
- Strategic planning
- Logistics
- Safety
- The 2015 Kimberley trip as a case study
- Outcomes and lessons for remote collecting





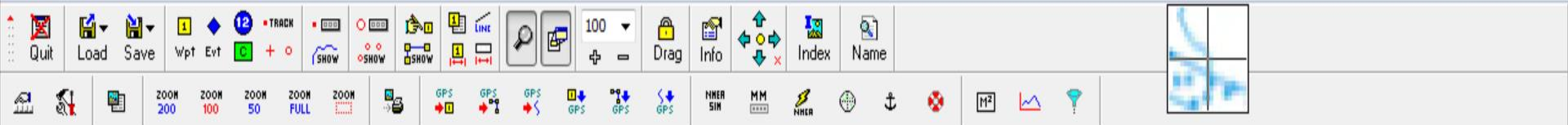
# Funding from the Friends of Kings Park and the Global Tree Project through the Australian Seed bank partnership











17° 28' 47.9" S 128° 05' 53.2" E UTM 52K 4 04 243E 80 67 119N Australian Geocentric 1994 (GDA94)

Map Waypoint Event Track Route



Waypoints Loaded: 7749 of 10000 (GPS:250 Events Used: 0 of 500)

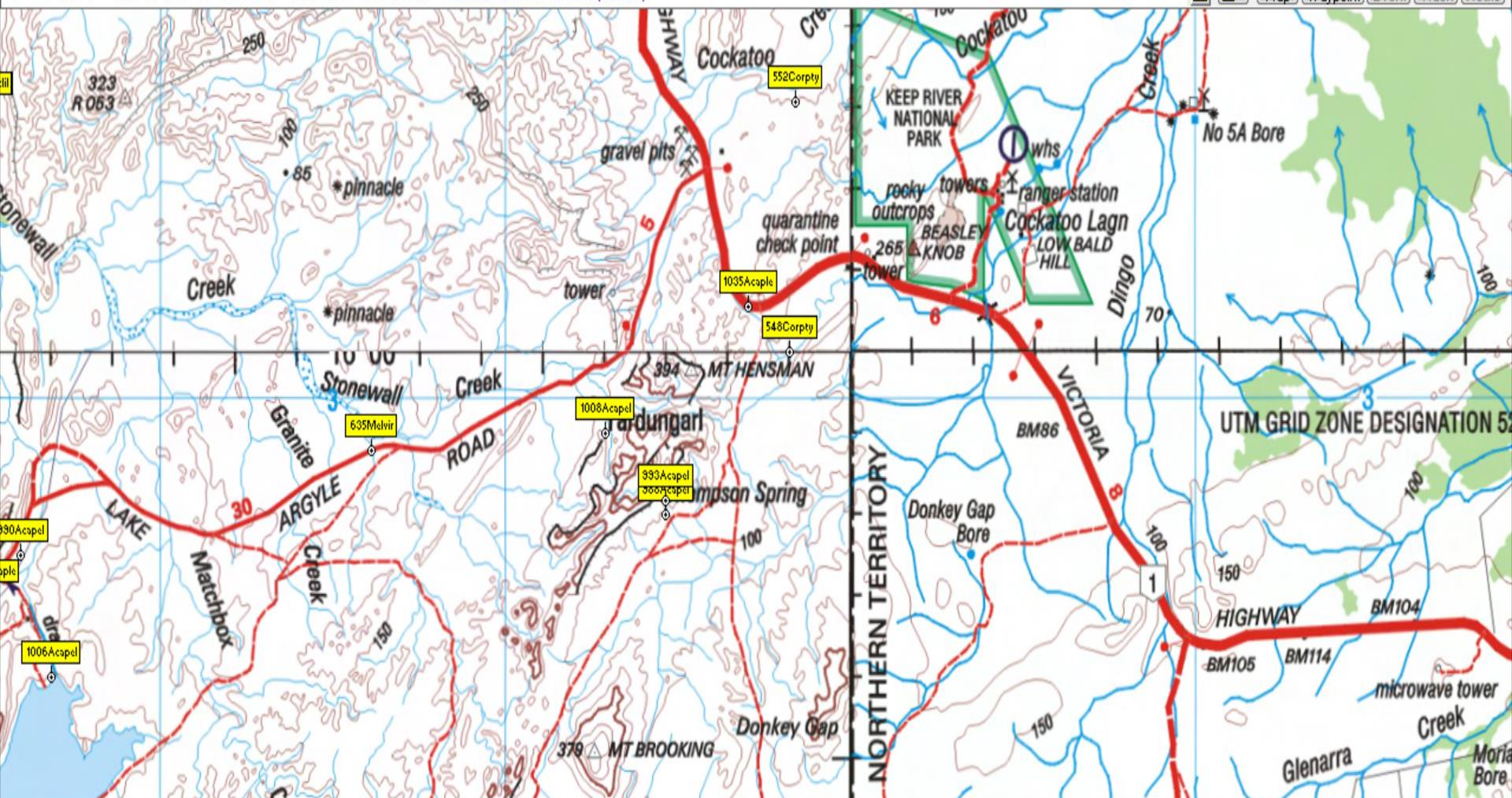


File Select View Map Options Moving Map Navigation GPS Help



15° 59' 45.0" S 128° 46' 10.0" E UTM 52L 4 75 333E 82 31 513N Australian Geocentric 1994 (GDA94)

Map Waypoint Event Track Route



Waypoints Loaded

Waypoints Used : 7749 of 10000 (GPS:250 Events Used : 0 of 500)





*Livistona victoriae* and *Eucalyptus brachyandra* at Thompson Springs 3kms from the NT border



# The Trip North June 3 2015





*Eremophila fraseri* subsp. *parva*  
Dooley Downs











*Eremophila maculata* subsp  
*brevifolia*



*Eremophila phyllopoda*

Photos: A.P. Brown, J.D.



*Eremophila forrestii*



*Eremophila rhexos*

Photos: J.D. Start