

Urban Bushland and Fire Management



Natural Area
CONSULTING MANAGEMENT SERVICES

Sue Brand

Senior Environmental Scientist

Natural Area, Perth

sue.brand@naturalarea.com.au

Overview

- Background
- Competing values
- Developers and bushland areas
- Local government and bushland areas
- Department of Fire and Emergency Services (DFES)
- Similarities and differences



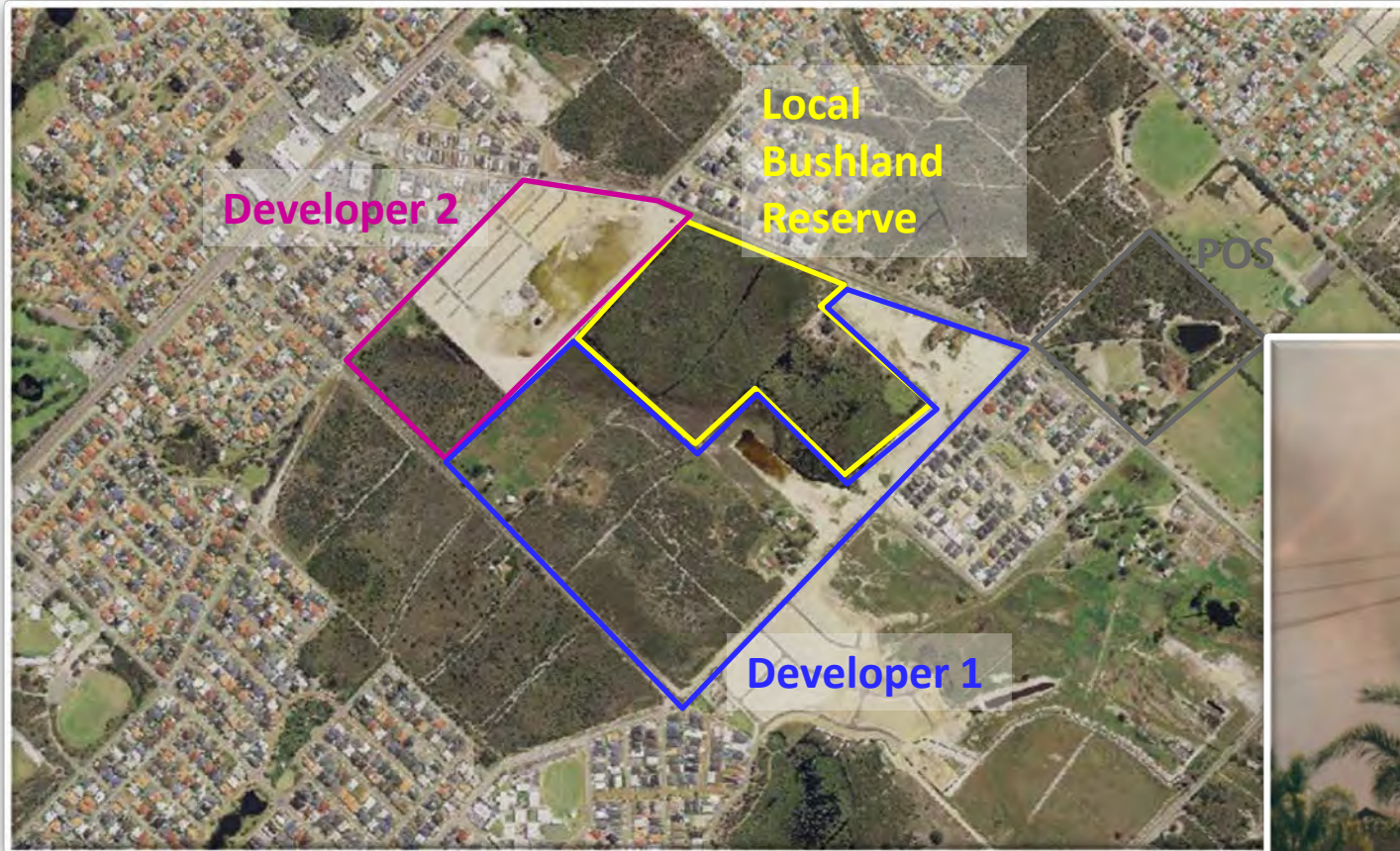
Natural Area
CONSULTING MANAGEMENT SERVICES

Background

- Many Australian bushland areas are prone to fire, and require fire for natural regeneration
- Different species prefer different periods between burns to ensure ongoing survival
- But...in a local bushland area, trying to mimic what occurs naturally can prove problematic and requires active intervention to manage fire and its impacts within the community



Competing Values



Stakeholders

- Developers
- Land manager
- DFES
- Local community



Natural Area
CONSULTING MANAGEMENT SERVICES

Developers

- Maximum number of Lots ... or maximum return on investment
- Bits that are difficult to build/develop or have significant environmental values become POS, either landscaped or retained as 'bush'
- Comply with standards and guidelines
- Minimum number of Lots with bushfire attack level (BAL) rating



Natural Area
CONSULTING MANAGEMENT SERVICES



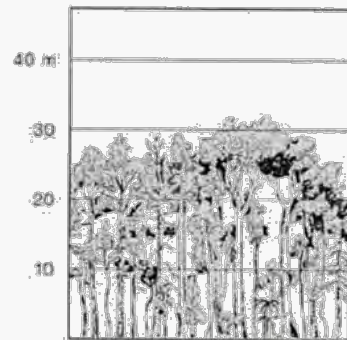
Developers – Fire Management Tools

- Undertake bushfire hazard assessment
- Preparation of a bushfire management plan that complies with
 - Planning for Bushfire Protection Guidelines, WAPC, DoP and FESA (DFES)
 - AS 3959 – 2009 – Construction of Buildings in Bushfire Prone Areas
- Considers:
 - location, amount and type of vegetation as per AS 3959
 - slope or gradient
 - areas where BAL ratings apply
 - access; residents, DFES
 - other fire management measures



Developers – Fire Management Tools

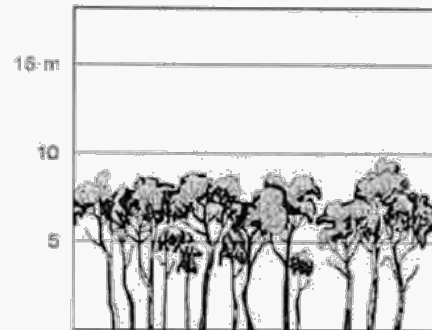
Open Forest (A-3)



OPEN FOREST A-03



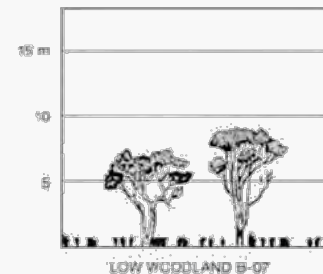
Low Open Forest (A-4)



LOW OPEN FOREST A-04

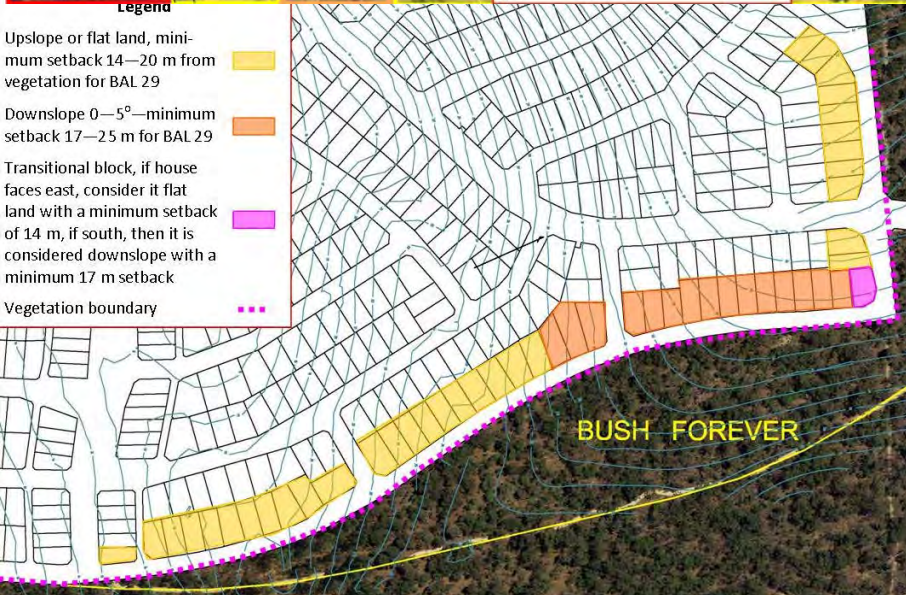
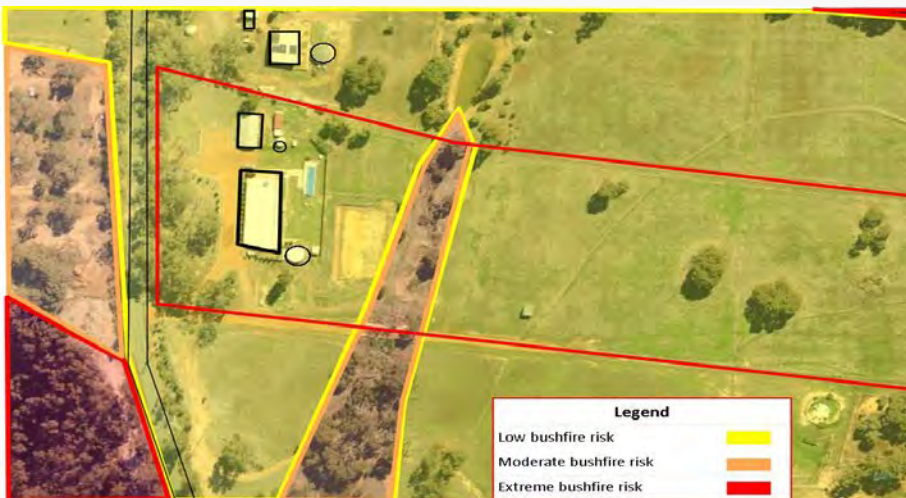


Low Woodland (B-7)

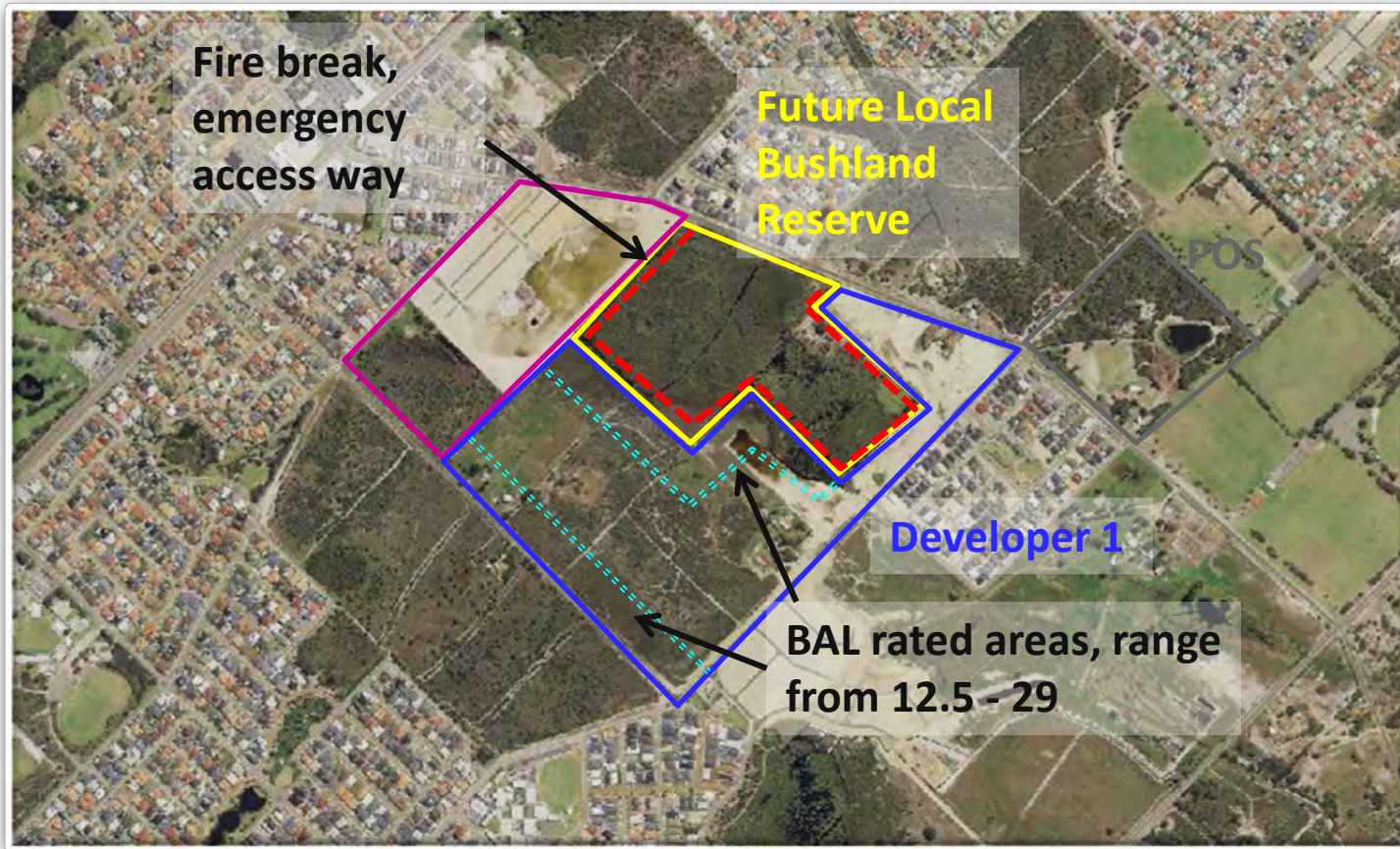


Natural Area
CONSULTING MANAGEMENT SERVICES

Developers – Fire Management Tools



Developers – Fire Management Tools



Natural Area
CONSULTING MANAGEMENT SERVICES

Land Managers

- Maximum retention of bushland and ecological/environmental values
- Protection of community, property and infrastructures
- Balance between protection of natural and human values
- Fire fuel load assessment, bushfire management plan



Natural Area
CONSULTING MANAGEMENT SERVICES



Land Managers – Fire Management Tools

- Appropriate fire management within the reserve:
 - fire breaks
 - access, emergency response
 - reserve emergency response considerations
- Consideration of potential fire hazards in nearby residential areas:
 - proximity to housing and other sensitive premises
 - BAL ratings
 - emergency response to nearby housing

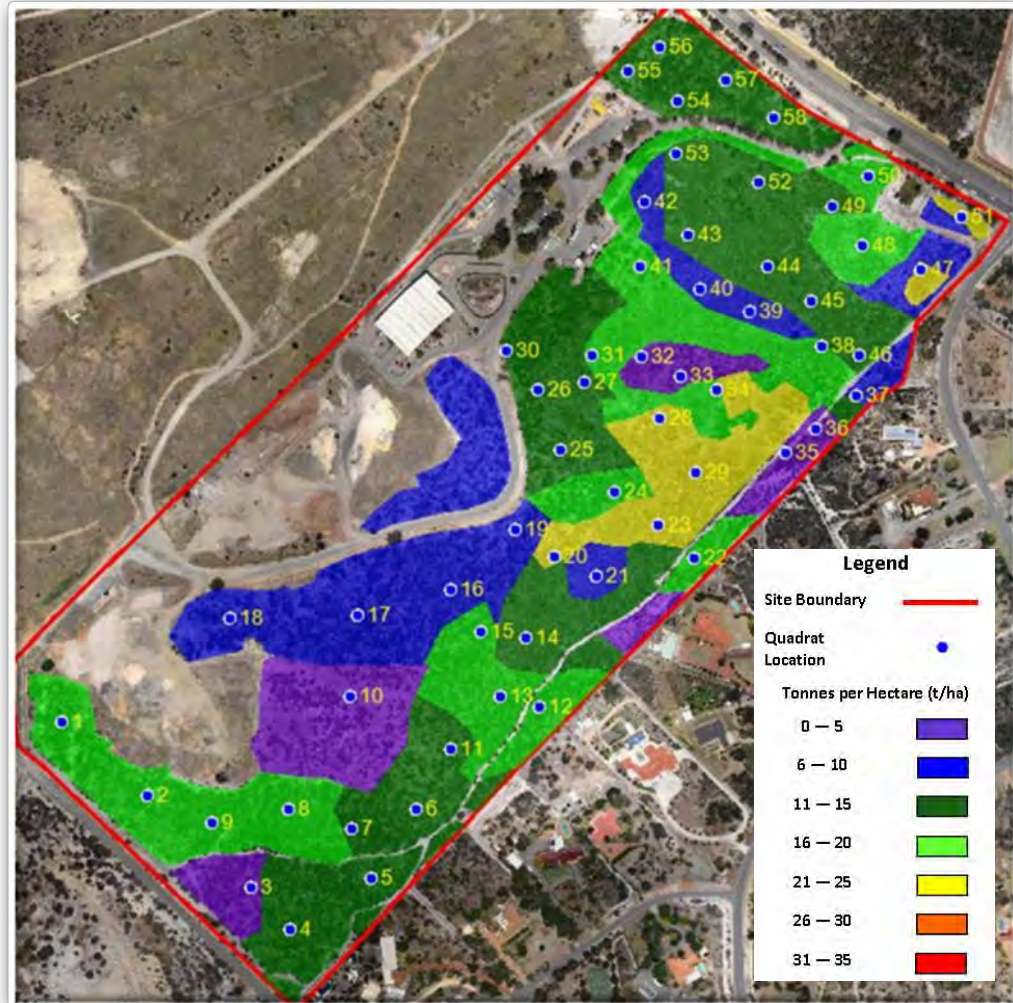


Natural Area
CONSULTING MANAGEMENT SERVICES



Land Managers – Fire Management Tools

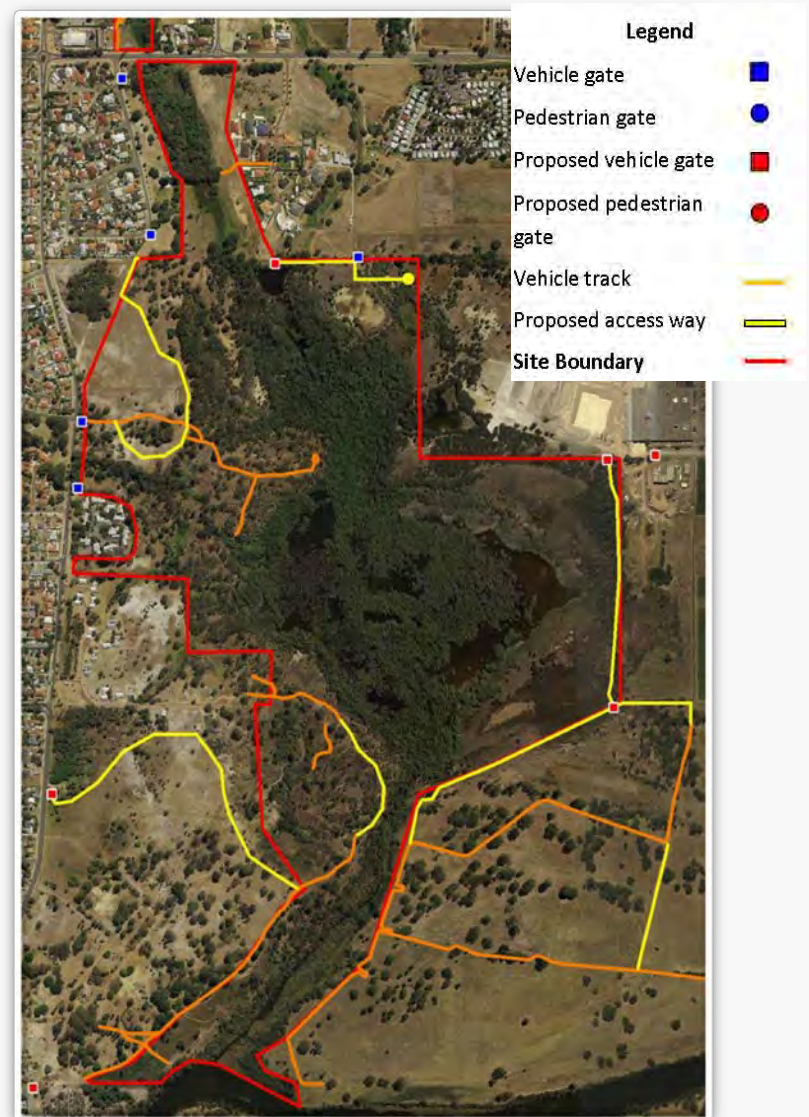
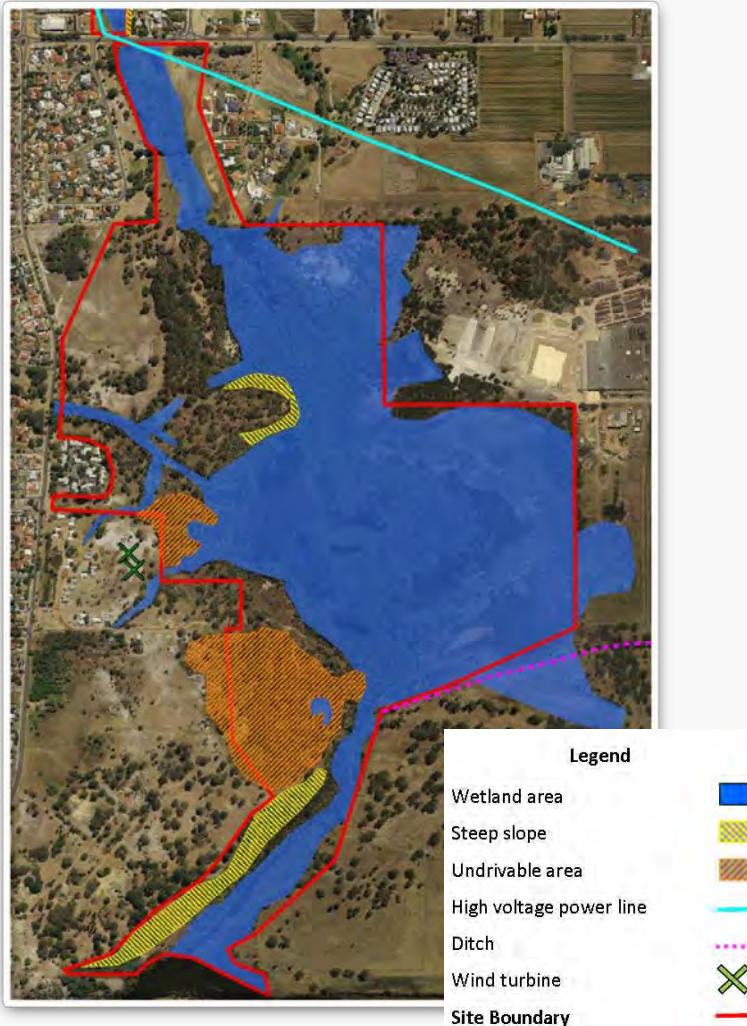
Fire Fuel Load Assessment



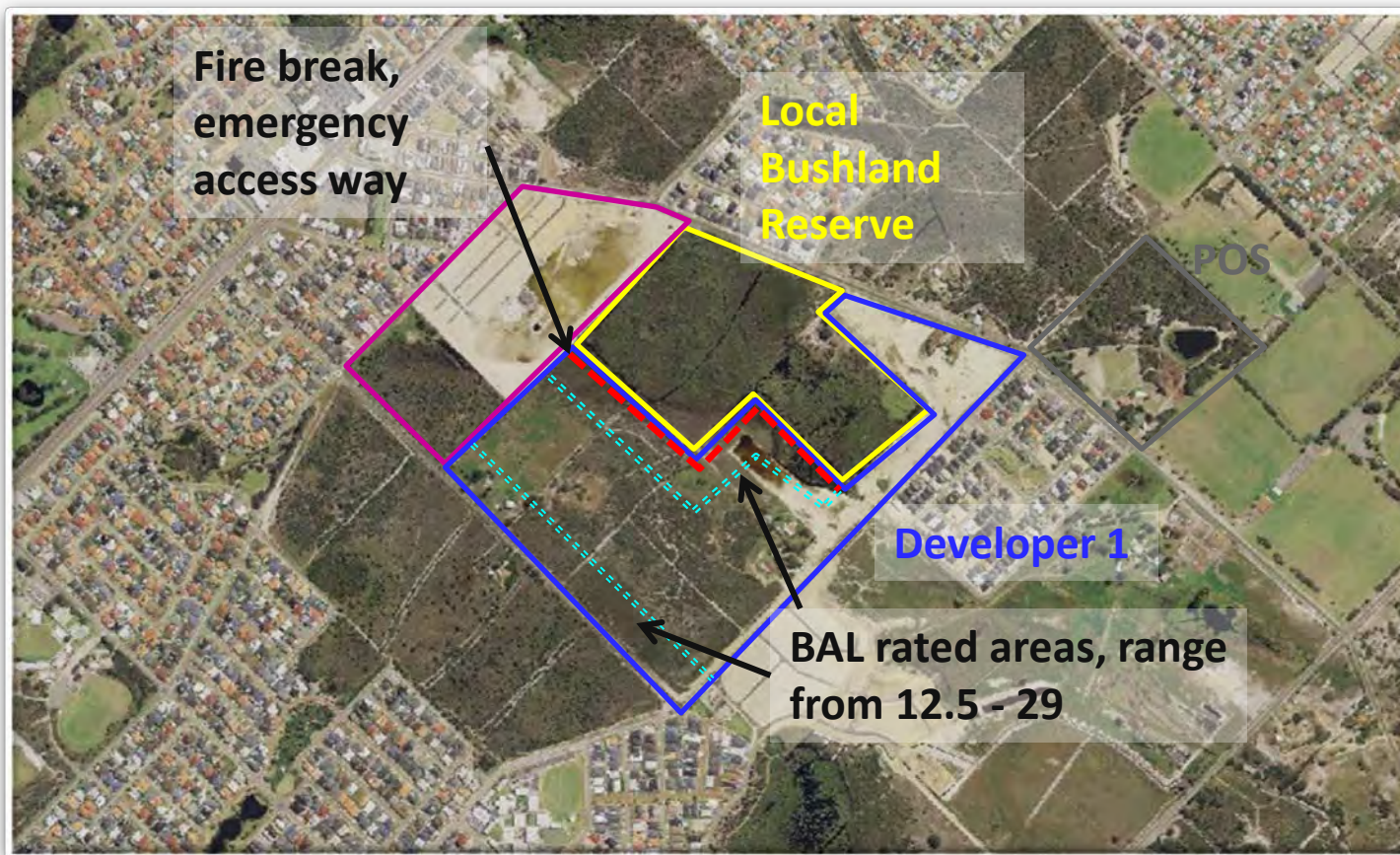
Natural Area
CONSULTING MANAGEMENT SERVICES

Land Managers – Fire Management Tools

Fire Management Plans



Land Managers – Fire Management Tools



Natural Area
CONSULTING MANAGEMENT SERVICES

Department of Fire & Emergency Services

- Safe access for responders and equipment
- Protection of life, property and infrastructure:
 - people
 - buildings, houses
 - utilities, communication
- Minimise spread of fire to neighbouring areas



Natural Area
CONSULTING MANAGEMENT SERVICES

Similarities and Differences

- Similarities:
 - protection of 'investment', be it bush or development
 - minimise impacts of fire in nearby areas
 - approach
- Differences:
 - where the 'lines' are drawn
 - who pays for what



Natural Area
CONSULTING MANAGEMENT SERVICES

Questions?



Sue Brand

Senior Environmental Scientist

Natural Area

sue.brand@naturalarea.com.au



Natural Area
CONSULTING MANAGEMENT SERVICES